

INVESTING IN THE DEVELOPMENT AND DEPLOYMENT OF ARTIFICIAL INTELLIGENCE SOLUTIONS AT THE AMERICAN HOSPITAL OF PARIS MEANS PUTTING MEDICAL INNOVATION TO WORK FOR YOUR HEALTH

WE NEED YOU

The American Hospital of Paris receives no funding from the French or American governments. Only your generosity can finance the investments that sustain our hospital's continuous innovation strategy, to offer you medical excellence, every day.

OUR GOAL

→ Raise €450,000 to finance, over the next three years, the development and deployment of artificial intelligence solutions and guarantee access to them for all patients.

PROVISIONAL CALENDAR

- **June 2020:** The first three AI solutions will be installed in our imaging department and available to our patients.
- **October 2020:** Completion of a research project conducted in collaboration with Columbia University to improve breast cancer screening.
- **1st quarter 2021:** Installation of a software solution to detect microcalcifications in breast cancer screening, designed by Columbia University.
- **1st quarter 2022:** Development of a coronary calcium scoring software solution to better evaluate the risk of a cardiovascular event (in partnership with INCEPTO).

YOUR SUPPORT IS ENCOURAGED

As an institution of recognized public benefit, the American Hospital of Paris is authorized to receive donations and bequests, allowing you to benefit from tax advantages.

- 75 % of your donation amount can be deducted from your **IFI wealth tax on real estate assets**
- 66 % of your donation amount can be deducted from your **income tax**
- 60 % of your donation amount can be deducted from your corporate tax

OUR COMMITMENTS

- We will rapidly send you a tax receipt enabling you to claim this tax credit
- We will keep you informed about work in progress and how our project evolves
- For all donations of €5,000 or more, your name will appear in our 2020 annual report (with your consent).
- For all donations of €20,000 or more, your name will be added to the Donor Recognition Wall (with your consent).

For further information, please feel free to contact us:

AGNÈS TOUCHET-CHAZAL,
DONOR RELATIONS MANAGER
Par tél. : 01 46 41 25 49
Par mail : agnes.touchet-chazal@ahparis.org

JÉRÔME DEANA,
CHIEF DEVELOPMENT
AND COMMUNICATIONS OFFICER
Par tél. : 01 46 41 25 41
Par mail : jerome.deana@ahparis.org



0100010101001001001
010100010110
01110100100
010110110
101111
1100110010
00100110
100101100010
0010001110000
101100010
0100001
00100011
011100001
001000000
1000001
0010110000
100100
101000111
00111100
10
10011
0100000
01
0
1
11
01101001100
0001
0
1011
0101000101
01001001001
010100010110
01110100100
010110110
101111
1100110010
00100110
100101100010
0010001110000
101100010
0100001
00100011
011100001
001000000
1000001
0010110000
100100
101000111
00111100
10
10011
0100000
01
101100010
0100001
00100011
011100001
01101001100
0001
0
1011
01 0100010101001001001
010100010110
01110100100
010110110



TAKE PART IN A TRUE MEDICAL REVOLUTION:

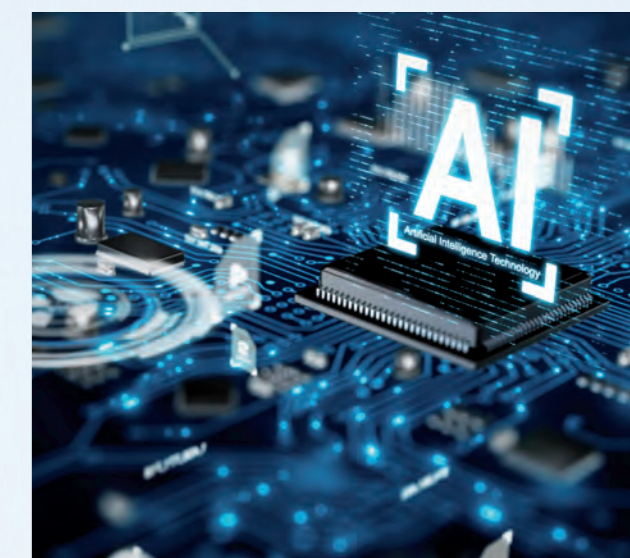
SUPPORT THE DEVELOPMENT AND DEPLOYMENT OF ARTIFICIAL INTELLIGENCE AT THE AMERICAN HOSPITAL OF PARIS



TOGETHER, LET'S OPEN THE DOORS OF THE AMERICAN HOSPITAL OF PARIS TO THE MEDICINE OF TOMORROW

Artificial intelligence (AI) offers tremendous medical opportunities. Today, the American Hospital of Paris has become a leader in this field, not only by offering patients initial applications in imaging, but also by developing highly promising research projects

As always, our goal remains unchanged: deliver the best in French and American medicine to all.



0100010101001001001
010100010110
01110100100
010110110
101111
1100110010
00100110
100101100010
0010001110000

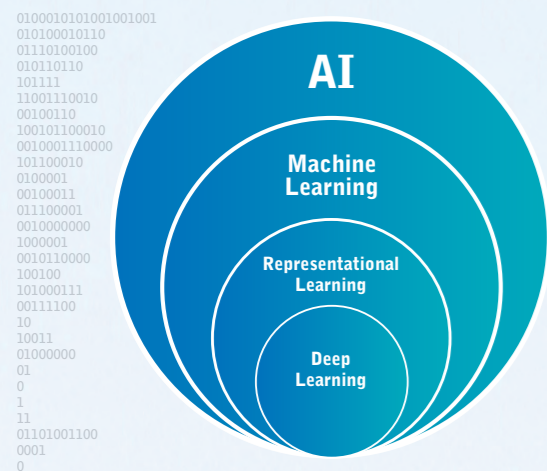
FOCUS ON ARTIFICIAL INTELLIGENCE

A REVOLUTIONARY INNOVATION

Artificial intelligence is coming to our hospital via the imaging department. As devices become more and more sophisticated, they generate increasingly large numbers of images – 1,000 to 1,500 per exam! Because AI helps radiologists process this data by identifying any “suspicious” images in record time, it reinforces the accuracy of medical expertise and saves doctors precious time. Time that can be spent on patients who need it the most.

A DIAGNOSTIC AND DECISION-MAKING TOOL

Each AI solution is based on a unique algorithm which is fed patient data and programmed to respond to a specific question in a given medical field. Artificial intelligence is a powerful, but single-task, technology.



0100010101001001001
010100010110
01110100100
010110110
101111
11001110010
00100110
100101100010
0010001110000
101100010
0100001
00100011
011100001
0010000000
1000001
0010110000
100100
101000111
00111100
10
10011
01000000
01
0
11
01101001100
0001
0
1011
0101000101
01010001001
010100010110
01110100100
010110110
101111
11001110010
00100110
100101100010
0010001110000
101100010
0100001
00100011
011100001
0010000000
1000001
0010110000
100100
101000111
00111100
10
10011
01000000
01
101100010
0100001
00100011
011100001
01101001100
0001
0
1011
01000010101001001001
010100010110
01110100100
010110110
101111
11001110010
00100110
100101100010
0010001110000
101100010
0100001
00100011
0010000000
1000001
0010110000
100100
101000111
00111100
10
10011
01000000
01
0
11
01101001100
0001
0
1011
0101000101
01001001001
010100010110
01110100100
010110110
101111
11001110010
00100110
100101100010
0010001110000
101100010
0100001
00100011
011100001
0010000000
1000001
0010110000
100100
101000111
00111100
10
10011
01100010
0100001
00100011
011100001
01101001100
0001
0
1011
01000010101001001001
010100010110
01110100100
010110110
101111
11001110010
00100110
100101100010
0010001110000
101100010
0100001
00100011
011100001
01101001100
0001
0
1011
01000010101001001001
010100010110
01110100100
010110110
101111
11001110010
00100110
100101100010
0010001110000
101100010
0100001
00100011
011100001
0010000000
1000001

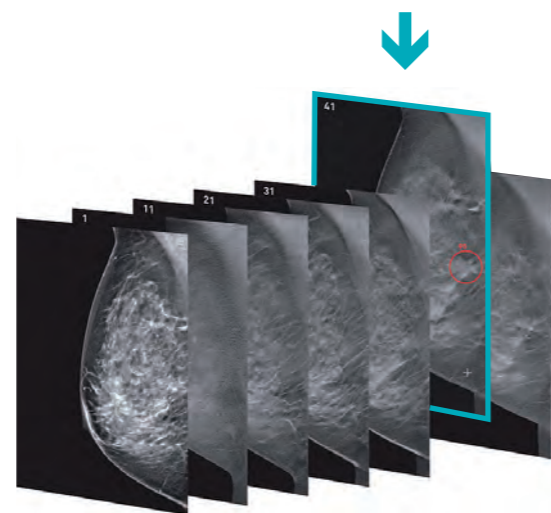
1 MAKE ARTIFICIAL INTELLIGENCE A CLINICAL REALITY ACCESSIBLE TO ALL

The American Hospital of Paris will be one of the first institutions, in France and across Europe, to incorporate AI as a routine component of imaging exams. Under the leadership of Professor Jean-Luc Sarrazin, Chief of Medical Imaging, Nuclear Medicine and Interventional Radiology, we are partnering closely with INCEPTO, a provider of AI solutions. Innovative applications will very soon be installed and available to all patients, allowing us to respond to major public health concerns.



IMPROVE BREAST CANCER DIAGNOSIS

The new interactive solution was “trained” by analyzing more than one million images. It identifies the most suspicious areas on 2D and 3D mammograms. Results are given a score based on the risk of the presence of cancer, allowing doctors to confidently give priority to certain exams.

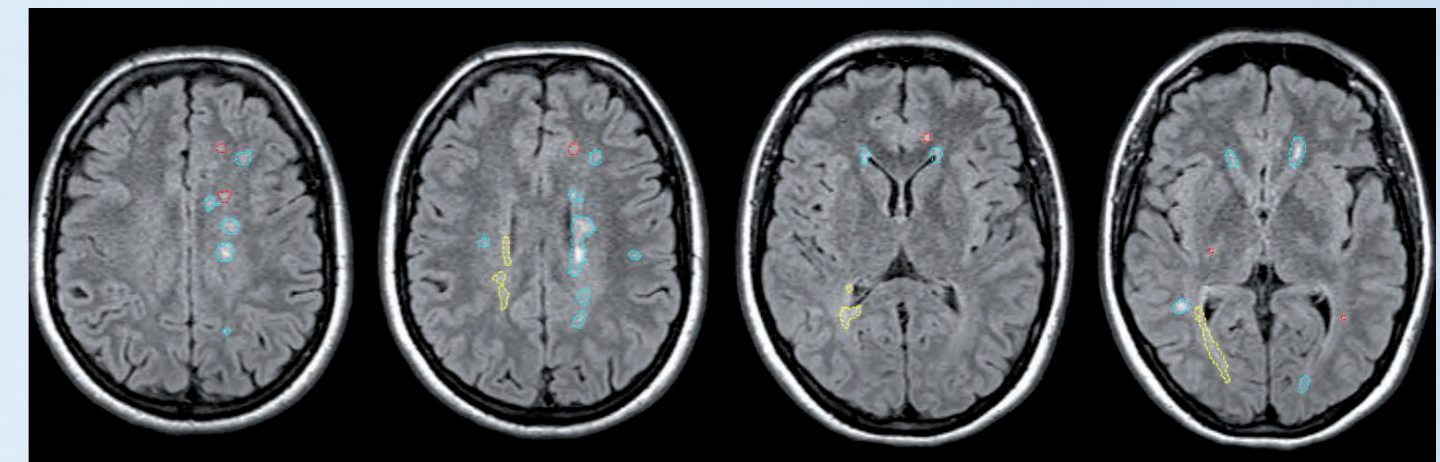


FACILITATE THE EARLY DETECTION OF LUNG CANCER

This solution automatically detects and measures lung nodules as well as their growth rate and composition, the aim being the very early detection of lung cancer. This is good news knowing that at Stage 1, the five-year patient survival rate is 80 percent, and that without a national screening campaign, at-risk populations are usually diagnosed too late.

PREDICT HOW NEURODEGENERATIVE DISEASES WILL EVOLVE AND ADAPT TREATMENTS ACCORDINGLY

By acquiring an application to automatically monitor and measure brain lesions caused by multiple sclerosis, Alzheimer’s and other similar diseases, our doctors will be able to predict how these diseases will evolve over time and, more importantly, determine the most appropriate treatment for each patient within a much shorter timeframe. Faced with the challenges inherent to these pathologies, our patients will benefit from the best possible care available.



2 DEVELOP NEW SOLUTIONS THAT ARE VITAL TO YOUR HEALTH

0100010101001001001
010100010110
01110100100
010110110
101111
11001110010
00100110
100101100010
0010001110000
101100010
0100001
00100011
011100001
0010000000
1000001
0010110000
100100
101000111
00111100
10
10011
01000000
01
0
11
01101001100
0001
0
1011
0101000101
01001001001
010100010110
01110100100
010110110
101111
11001110010
00100110
100101100010
0010001110000
101100010
0100001
00100011
011100001
0010000000
1000001
0010110000
100100
101000111
00111100
10
10011
01000000
01
01100010
0100001
00100011
011100001
01101001100
0001
0
1011
01000010101001001001
010100010110
01110100100
010110110
101111
11001110010
00100110
100101100010
0010001110000
101100010
0100001
00100011
011100001
0010000000
1000001

Thanks to our partnership with INCEPTO, the American Hospital of Paris also intends to invent new AI applications.

BREAST CANCER

Our hospital, represented by Dr. Marc Abehsera, is participating in a research project initiated by Columbia University. The aim is to develop a software solution capable of detecting and analyzing microcalcifications on a mammogram that signals an early-stage cancer. Once operational, this solution will enable doctors to very rapidly decide, for each patient, whether to perform a stereotactic core needle biopsy, surgery, or simple monitoring. This will significantly reduce the number of unnecessary invasive procedures – a real advantage for our patients!

CARDIOVASCULAR DISEASE

The American Hospital of Paris was one of the very first establishments to offer patients an early screening test for heart disease. The test, called coronary calcium scoring, measures the amount of calcium on the coronary artery walls. We have a considerable lead in this field and are the only hospital in France with enough patient data to program an AI solution. Such a solution would enable us to identify a calcium plaque in seconds, highlight it, define its contours and record its location on the artery, all of which are time-consuming tasks for the doctor. We expect to be able to develop this solution in the coming months, in partnership with INCEPTO.



“Artificial intelligence doesn’t replace doctors by any means. It facilitates their work by performing tedious, time-consuming tasks, making their expertise more accurate, rapid and granular. This is what we call ‘augmented radiology’. We have reached a turning point in the history of medicine, and the American Hospital of Paris is fortunate to be playing a key role in events.”

Docteur Mars Abehsera